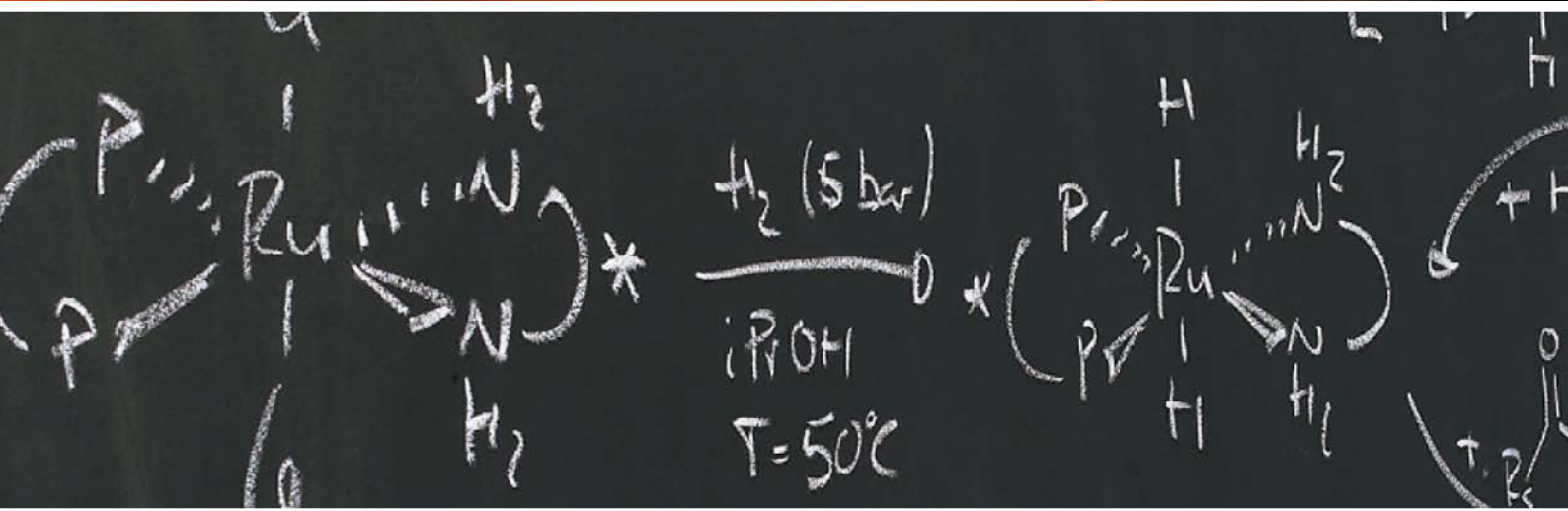


# Products & Solutions



All our products embody our philosophy of "Quality in your hands". We strive to meet the needs of our customers to the highest degree by developing products and solutions that are robust, cleverly designed, convenient and easy to use.

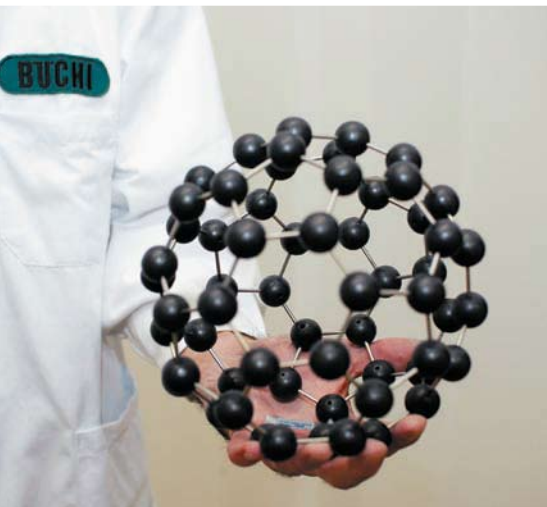


# Quality in your hands



## Quality

Büchi is one of the world's leading suppliers of key technologies such as evaporation and separation for research laboratories, near-infrared spectroscopy, Kjeldahl and extraction for quality control purposes. Our goal is to sustain a high level of competence in product development, manufacturing and applications related to these technologies. We believe that providing high-quality products and responsive service is the best way of supporting the innovation and effectiveness of our customers.



## Solutions

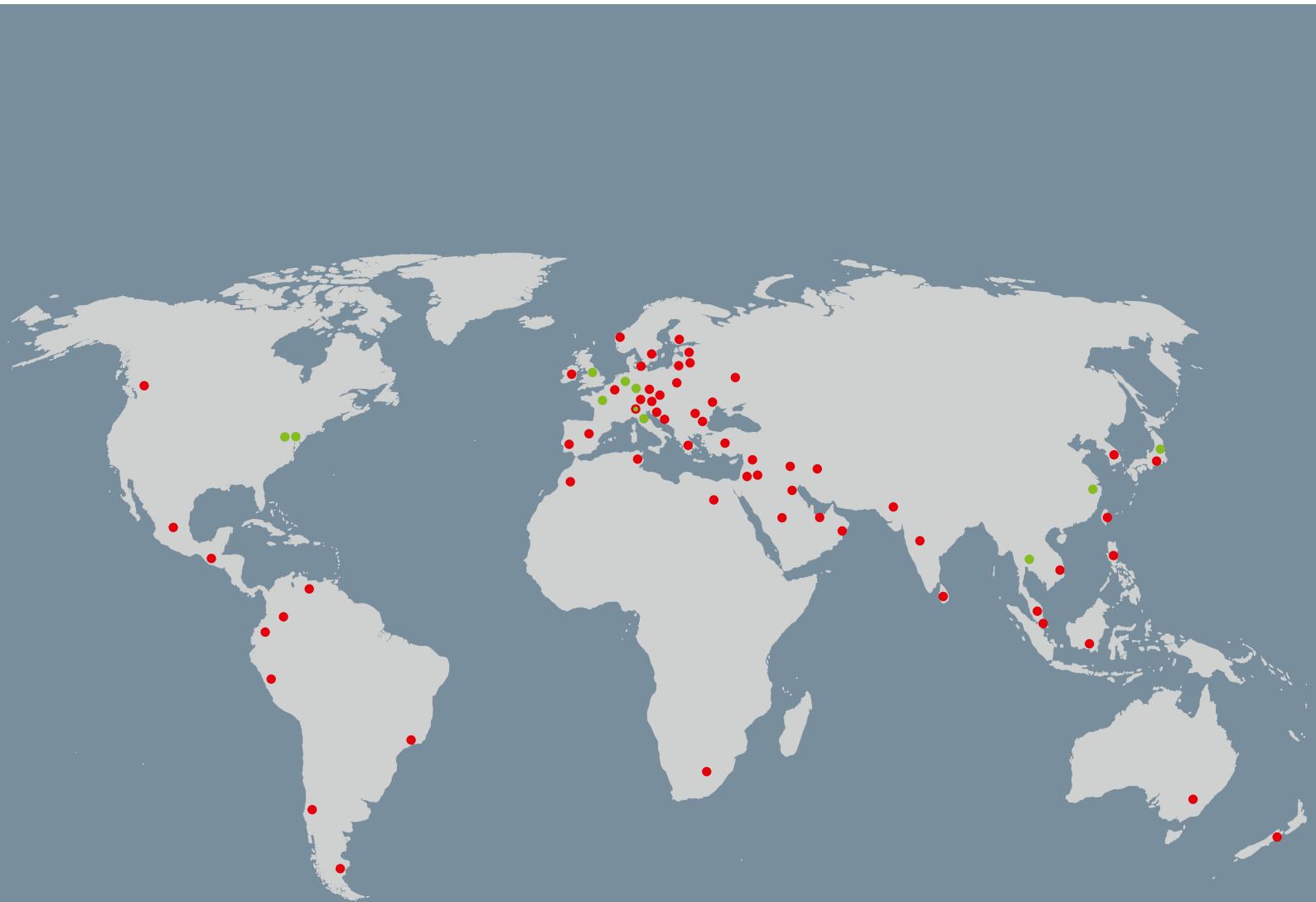
Büchi is not just a manufacturer of individual instruments. We are also a proven solution provider, combining different components to create complex systems for individual applications. Thanks to our profound application know-how, we can develop the optimum configuration to create tailor-made solutions for the most demanding customers.



## Customer focus

Our company employs over 400 people, all with one goal: to serve our customers as best we can. Our affiliates and distributors worldwide speak your language. Our application and support specialists are there to assist you wherever you are. We know that the basis of successful cooperation is understanding our customer's situation.

Our worldwide net of qualified distribution partners enables us a close customer contact. Since we are familiar with the requirements of our target markets, we are able to offer our experience and knowledge to provide first-rate solutions.



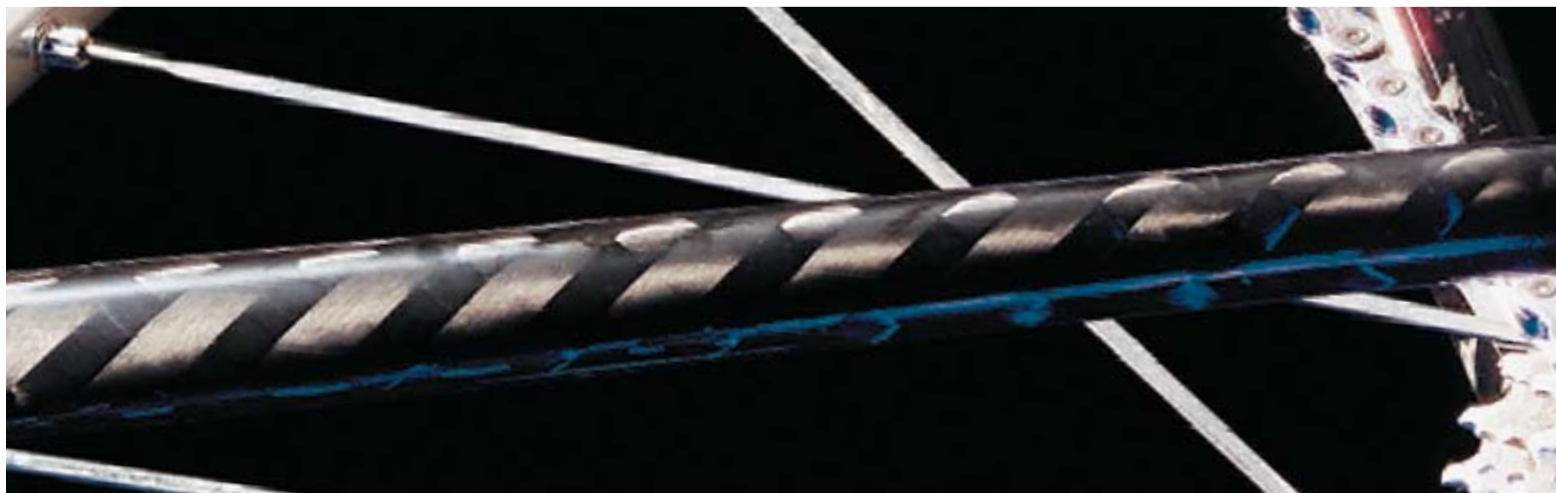
- Buchi Headquarters in Flawil, Switzerland
- Buchi Affiliates
- Distribution Partners

# Global Partnership

Argentina	Tec Instrumental S.A.	info@tec.instrumental.com
Australia	In Vitro Technologies Pty Ltd.	info@invitro.com.au
Austria	Labor-Partner/Service	info@laborpartner.at
Belgium	Q-Lab Products	info@qlab.be
Brazil	Pensalab	pensalab@pensalab.com.br
Bulgaria	Donau Lab GmbH	donaulab@mail.orbitel.bg
Chile	Cientec Instrumentos Cientificos S.A.	cientec@cientecinstrumentos.cl
Colombia	Polco S.A.	polco@epm.net.co
Croatia	Donau Lab d.o.o.	donaulab@donaulab.hr
Czech Republic	Donau Lab spol. s r.o.	donau_cz@mbox.vol.cz
Denmark	Bie & Berntsen AS	info@bie-berntsen-as.dk
Ecuador	Espectrocrom Cia Ltda.	espectrocrom@andinanet.net
Egypt	Labib Demian Youssef & Co.	etalabib@link.net
Estonia	Est-Doma	tartu@estdoma.ee
Finland	Tamro MedLab Oy	medlab.asiakapalvelu@tamro.com
Greece	Biodynamics SA	biodynamics@otenet.gr
Greece	P. Bacacos SA	central@bacacos.gr
Guatemala	Precision S.A.	branprec@infovia.com.gt
Hungary	Donau Lab KFT	donau.hu@mail.datanet.hu
Indonesia	Abadi Nusa	abntoday@abadinusa.co.id
Iran	Imaco Ltd.	imaco@imaco.org
Iraq	Sumhar Technologies	info@sumhar.com
Ireland	Mason Technology Ltd.	info@masontec.ie
Israel	Dr. Uri Golik	golik@inter.net.il
Jordan	Sena Establishment f. Laboratory Equipment Trading	senalab@batelco.jo
Korea	Sung Jin I&T Co. Ltd.	kcpark@sjint.co.kr
Korea	Hwashin Instrument Co. Ltd.	mail@hwashin.net
Kuwait	Al Sedan Trading + Contracting Co.	rajan@alsedan.com.kw
Latvia	Sia Doma	doma@sal.lv
Lebanon	Labib Demian & Co. sarl	etalabib@link.net
Lithuania	Vil Doma	dd@vildoma.lt
Malaysia	Chemopharm SDN. Berhad	sales@chemopharm.com.my

Mexico	Equipar S.A.	equipar@equipar.com.mx
Morocco	Tecnilab	tecnilab@iam.net.ma
New Zealand	Global Science & Technology Ltd.	global@globalscience.co.nz
Norway	Bergman AS	info@bergman.no
Oman	Business International Group LLC	bigllc@omantel.net.om
Pakistan	M/S Continental Worldwide	eswctwc@fascom.com
Peru	Cimatec S.A.C.	ventas@cimatec.com.pe
Philippines	Dakila Trading Corporation	sales@dakila.com
Poland	Donserv	info@donserv.com.pl
Portugal	Rotoquimica Lda.	rotoq@rotoquimica.pt
Romania	Donau Lab srl.	donau_ro@cael.pub.ro
Russia	Donau Lab Moscow	don.ru@asvt.ru
Saudi Arabia	Bayouni Trading Ltd.	trd@bayouni.com
Serbia/Montenegro	Donau Lab d. o. o.	boniko@net.yu
Singapore	Chemoscience PTE. Ltd.	enquiry@chemoscience.com.sg
Slovakia	Donau Lab spol. s r.o.	donau-sk@internet.sk
Slovenia	Donau Lab d.o.o.	don.si@siol.net
South Africa RSA	Labotec (PTY) Ltd.	sales@labotec.co.za
Spain	Massó Analítica S.A.	sales@masso.com
Sri Lanka	Hemsons International (Pte) Ltd.	hemslab@slt.lk
Sweden	BergmanLabora AB	info@bergmanlabora.se
Syria	Mimosa	mimosa@net.sy
Taiwan	Suntex Instruments Co., Ltd.	suntex@ms1.hinet.net
Tunisia	Science and Technology	satco@planet.tn
Turkey	SEM A.Ş.	Mine@semmlab.com.tr
Turkey	Anamed Analitik VE	sales@anamed.com.tr
Ukraine	Donau Lab Kiev	don.ua@istrada.net.ua
United Arab Emirates	Business Communications LLC.	bclauh@emirates.net.ae
Venezuela	Cenatec C.A.	sales@cenatec.com
Vietnam	Diethelm & Co., Ltd. Representative Office	tuan.quang@tech-diethelmn.com

Evaporation and separation are key steps in many laboratories. For decades, Buchi's rotary evaporators have made it the world leader in laboratory evaporation. Every day our customers know they can rely on equipment that is robust, easy-to-use and of the highest quality. And by constantly innovating all our products and processes, we are able to keep on responding to the needs of laboratories as they change and evolve.



# Solutions for Evaporation and much more



**Your challenge is to create new products for the future - we help you take on the challenge**

The driving force of innovation is the transformation of visions into reality. Promising ideas only develop into successful products where creativity meets teamwork. We see ourselves as part of our customer's teams, providing products and know-how and developing optimum solutions to enable them to meet their challenges and achieve their goals.



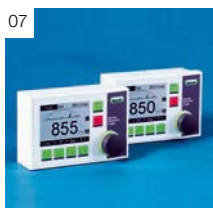
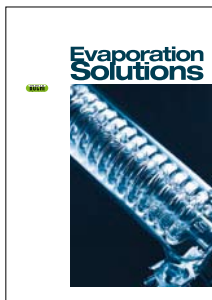
**Your working process consists of many steps - we offer integrated solutions**

Progress involves many different steps, where each step depends on the preceding one. We strive to create solutions that not only fulfill the specific requirements of one single step, but which take the whole process into account – solutions that enhance quality and increase the productivity of the laboratory process.



**You have to allocate your resources effectively - we make your laboratory more efficient**

The need to convert fundamental research into innovative products as quickly as possible means you are always under pressure to increase efficiency and throughput. By constantly innovating our core and complementary products, we can provide our customers with reliable and efficient solutions to meet the most demanding targets.



**01 Rotavapor® R11**

The Rotavapor R11 focuses on the basic needs for classical laboratory applications in the field of research and training. Manual quick-action jack for an easy operation. Cordless heating bath for water for a temperature range from 20 to 95 °C. The Rotavapor R11 is available with diagonal, vertical or dry ice condenser.

**02 Rotavapor® R-210**

Laboratory rotary evaporator for evaporation flasks of up to 4 litres. Motorised quick-action jack easily operated by one button. Cordless heating bath for water and oil, with digital display, for a heating range from +20°C to +180°C. Long-life seals enable practically maintenance-free operation. Continuous vapour duct easy to remove and clean, preventing cross-contamination.

**03 Rotavapor® R-215**

Model with additional digital display for vapour temperature and rotation speed. Wide range of seven application-specific glass assemblies to choose from. Upgradeable to a complete solution with Vacuum Controller V-850/855, Vacuum Pump V-700/710 and Distillation Chiller B-741.

**04 Multivapor P-12**

Parallel evaporation of up to 12 samples at the same time in connection with the Rotavapor R-210/R-215. Use of a maximum of synergies with a minimum of required space. Vapor is transferred to the condenser of the Rotavapor via individual vacuum seals. Adapters for various vessel types and sizes are available.

**05 Vacuum Pump V-700**

Chemically resistant, oil-free PTFE diaphragm pump with a flow rate of 1.8 m³/h and an ultimate vacuum of <10 mbar. Optimally suited for work with a rotary evaporator or other classical laboratory applications. Virtually maintenance-free, with unique window heads for easy visual inspection. Solid housing with integrated carrying handle for minimal sound emissions. Single-stroke speed control for precise vacuum in combination with Vacuum Controller V-850/855.

**06 Vacuum Pump V-710**

Four-head PTFE diaphragm pump with a flow rate of 3.1 m³/h and an ultimate vacuum of below 2 mbar.

Economical central vacuum source with a small footprint. Optimally suited for work with large 20 litre rotary evaporators or for applications with high boiling solvents requiring low vacuums.

**07 Vacuum Controller V-850 / V-855**

Vacuum Controllers V-850/V-855 allow speed control of Vacuum Pump V-700/710 for a precise, hysteresis-free vacuum and quiet operation. Programmable, with intuitive menu guidance in 6 languages. Integrated solvent database for setting distillation conditions. Optimal process control via timer and LabVac functions. Vacuum Controller V-855 additionally features gradient, repetition and auto distillation functions. Can be used with different instruments in a modular system. From Syncore, a large-scale Rotavapor to a drying oven, the controller meets all possible needs.

**08 Vacuum Pump V-700 Advanced**

Complete vacuum system consisting of Vacuum Pump V-700, Vacuum Controller V-850 and a secondary condenser for maximum recovery of solvents. Thanks to the frequency control of the vacuum pump, no additional in-line valve or valve unit is required.

**09 Vacuum Pump V-700 EasyVac**

Combined with Vacuum Module V-801 EasyVac, Vacuum Pump V-700 becomes a unique distillation system for the automatic evaporation of individual solvents. EasyVac automatically finds the start point, controls the optimal pressure and finally determines the end of the distillation process.

**10 Vacuum Pump V-710 LabVac**

Combined with Vacuum Module V-802 LabVac, Vacuum Pump V-710 becomes an efficient and easy-to-use laboratory vacuum system with different vacuum consumers connected. The LabVac module controls Vacuum Pump V-710 in line with the requirements of the user, resulting in minimised pump operation and low emissions.

**11 Glass Oven B-585**

Small instrument for drying samples, fractionating distillation, sublimation or even freeze drying in a temperature range from +40°C to +300°C. Excellent sample visibility. Mild drying

conditions thanks to radiation and smooth movement of samples by a rotation drive. Large graphical display with 6 selectable languages of operation.

**12 Recirculating Chiller Line**

Increased distillation efficiency, saving time and costs. Comes in stainless steel housings, and available with cooling capacities from 500 to 2500 W. Distillation Chiller B-741, with a fixed cooling temperature of +10°C and a cooling capacity of 500 W (at +15°C), is ideally suited for use with a Rotavapor.

**13 Rotavapor® R-220**

For the rapid and gentle distillation of up to 20 litre flask volumes. Heating bath with a wide temperature range from +20°C to +180°C for water and oil. Innovative flask fixing, opening and closing with one hand. EasyClamp connection for rapid installation of glassware. Eight glass assemblies available for different processes.

**14 Rotavapor® R-220 EX**

The first electrically heated ex-proof rotary evaporator in the world for 20 litre flasks. For safe and convenient operation. It combines ease of operation, functionality and the versatility of eight glass assemblies, and complies with stringent EC directive 94/9 on explosion-proof instruments (ATEX95).

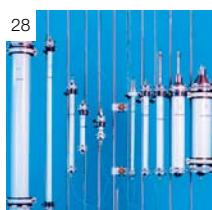
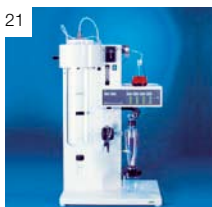
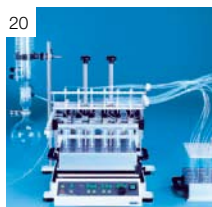
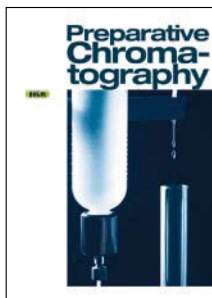
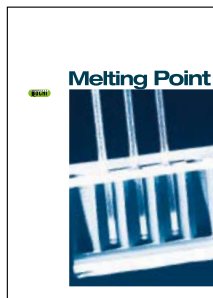
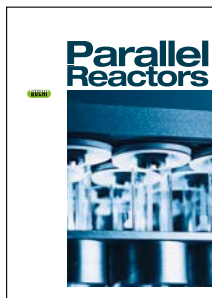
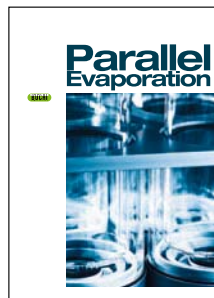
**15 Rotavapor® R-250**

Single-stage distillation for the pilot plant and production. Flask volumes of 20 and 50 litres. Electric bath rated 6.6 kW for a temperature range from +20°C to +180°C. Parallel condensers enable easy assembly and quick cleaning. Convenient handling even for large volume flasks. Maintenance and glass components are compatible with the R-220.

**16 Rotavapor® R-250 EX**

An explosion-proof version of the R-250. Electric bath heater up to 150°C and rotation drive with frequency converter ensure simple, precise and reproducible operation. The device meets new EU guideline 94/9 (ATEX). A wide range of accessories is available, including six different glass assemblies to choose from.





#### 17 Multivapor P-12

Efficient evaporation of up to 12 samples at the same time. Adapter set for different sample vessels. Basic version with Multivapor platform, crystal rack and coated Type S or C condenser. Extensible to the Multivapor P-12 Professional with additional re-condenser for the Vacuum Pump V-700 and Vacuum Controller V-855 with the clever EasyVac function.

#### 18 Syncore® Polyvap

For rapid parallel evaporation of different samples including high-boiling solvents. Interchangeable racks for 4 to 96 samples, with sample volumes from 1 ml to 500 ml. No cross-contamination thanks to individual connection of the sample glasses to the patented vacuum cover.

#### 19 Syncore® Analyst

Up to twelve samples can be evaporated simultaneously to a defined residual volume, rapidly and safely. Programmable time and temperature profiles. Hybrid heating and cooling principle for safe contraction without supervision. The powerful drive ensures intense vortex motion and avoids bumping. No cross-contamination.

#### 20 Syncore® Reactor

For the efficient parallel synthesis of 24 samples of 3 to 25 ml per tube. Efficient heating, cooling, shaking, refluxing and inert gas control. Subsequent evaporation without additional handling of the samples. Time and temperature profiles programmable. Up to 24 parallel filtrations are possible with the optional Filtration Unit.

#### 21 Spray Dryer B-290

The quick and easy way to dry solutions, suspensions or emulsions to a powder. 20 ml is enough to perform a spray drying run, with maximum through-put up to 1 l/h. Temperature range 20°C to 220°C. Gentle drying conditions and short retention time makes it especially suitable for temperature-sensitive products. Option of working safely with organic solvents by using the Inert Loop B-295 as an accessory.

#### 22 Inert Loop B-295

Spray drying in closed circulation under nitrogen to safely work with flammable solvents. Temperatures as low as -20°C can be reached.

#### 23 Melting Point B-540

Visual melting and boiling point determination in one unit. Heating range from ambient to 400°C without silicone oil. Enables determination of three samples at the same time. Magnifying glass for optimum observation. 9 programmable heating rates. Self-explanatory operation.

#### 24 Melting Point B-545

Automatic and visual determination of melting points and melting range. Three samples simultaneously. Suitable for coloured substances. Heating range from ambient to 400°C without silicone oil. Magnifying glass for optimal observation. 9 programmable heating rates. Determination according to Pharmacopoeia regulations.

#### 25 Sepacore Flash System

Mobile system for isocratic flash separations or binary gradient separations. Pulsation-free solvent transport enables a higher speed and optimized separation performance. Simple, intuitive settings and programming of binary solvent gradients of 0% – 100% for precise separations. Chemical-resistant and biocompatible for safe and reliable operation.

#### 26 Sepacore®

The logical modular system for the preparative or flash chromatography user. The system can be adapted and extended at any time in line with the separation tasks required. Covered pressure ranges up to either 10 or 50 bar at maximum flow rates of 250 ml/min for purification with flash cartridges or glass columns. Intelligent fraction collector with dialogue language options and teaching function for customer-designed racks.

#### 27 Cartridges and Cartridge® C-670

Transparent, robust Flash cartridges filled with high-quality silica gel enable quick and reproducible separations. Stable, vibration-depressant packaging guarantees maximum performance. The cartridge is the economic, fast and save way to pack high quality flash cartridges by oneself. No compromises concerning separation performance and transport stability. High flexibility, as this method is suitable for all common stationary phases with a particle size of 30 to 200 µm.

#### 28 Glass columns C-690

A wide choice of columns offers maximum flexibility in any situation. The Buchi product range comprises a variety of column types of different forms, sizes and designs for any amount of sample. For applications under high pressure Plastic+Glass-covered glass columns are available ensuring highest safety.

#### 29 Sepacore Record

Flexible, user-friendly chromatography software package. Supports the electronic data collection during separations.

#### 30 SepacoreControl

The SepacoreControl package enables an intuitive control of the Sepacore system via PC. It is easy to use and convinces with its flexibility. Graphical modification of binary solvent gradients from 0%-100% during the run. Monitoring and control of the chromatography parameters and the fraction collector.

## Kjeldahl Solutions



## Extraction Solutions



31



32



33



38



39



34



35



36



40



41



37

### 31 Digestion Units K-437/438

For parallel Kjeldahl digestions of up to 20 samples. Offering high-performance heating, continuously adjustable between 100 and 450 °C. An integrated control system allows time and temperature controlled digestion processes. The lift module enables the fully automated operation of the K-438. A tight exhaust system avoids any emissions by channelling aggressive fumes to Scrubber B-414.

### 32 Digestion Units K-424/435

For Kjeldahl digestions of up to 6 or 12 samples respectively, with continuously adjustable heat source. Highly efficient preheating within 10 minutes (for up to 650 °C) decreases digestion time substantially. A tight exhaust system avoids any emission by channelling aggressive fumes to Scrubber B-414.

### 33 Scrubber B-414

Compact gas scrubbing system for the efficient exhaust, neutralisation and adsorption of acid/alkaline fumes, aggressive gases and bad odours arising during Kjeldahl digestion or other processes. Featuring a multi-step function principle using a powerful pump. The two-step basic system is modularly extendable to three more sophisticated configurations. Guarantees maximum safety in the laboratory.

### 34 Digestion Units K-431/432

For parallel Kjeldahl digestions of up to 12 samples in 500ml sample tubes mainly for TKN application. Offering high-performance heating, continuously adjustable between 100 and 450 °C. An integrated control system allows time and temperature controlled digestion processes. The lift module enables the fully automated operation of the K-432. A tight exhaust system avoids any emissions by channelling aggressive fumes to Scrubber B-414.

### 35 Distillation Units K-350 and K-355

Distillation Unit K-350 and K-355 are efficient and versatile. Both units provide accurate and highly reproducible measuring results with a high recovery rate. They can be used for a wide range of applications in analytical laboratories in the food and beverages, feed, agricultural, environmental, chemical and pharmaceutical industries. These applications include classical nitrogen and protein determination practices such as Kjeldahl, TKN (total Kjeldahl nitrogen) and Devarda, in accordance with official methods (AOAC, EPA, ISO and DIN). Beyond the classical methods, the K-355 is designed for additional applications such as alcohol, sulphur dioxide, volatile acids and phenol determination.

### 36 Distillation Unit B-324

Compact, semi-automatic distillation unit with menu-controlled programming for quick, safe and reproducible distillation with steam. Allows storage of up to 20 programmes. Expandable to a fully automated analysis system with an external titration unit. Combining flexibility, high ease of use and maximum safety.

### 37 Kjeldahl Sampler System K-370/K-371

Compact, fully automated distillation and titration system. The most convenient solution available for precise analysis in Kjeldahl labs dealing with large sample throughput. Featuring a colour display, leading-edge multitasking software for ease of operation and a maintenance-free steam generator. Option of automated sample changing in combination with Autosampler K-371. High efficiency autosampler controlled via the AutoKjeldahl Unit K-370 for fully automated, unattended and safe operation. Featuring an innovative sample changing mechanism (transfer to the distillation unit using steam). The 20-space rack of the K-371 is fully compatible with Digestion Units K-437/438/431/432 and also includes a 4-space express rack. The modular K-370/K-371 combination is designed as a true bench top system.

### 38 Hydrolysis Unit B-411, E-416

Hydrolysis system for classical total fat determination according to Weibull-Stoldt. Manual working steps are minimized efficiently. Parallel hydrolysis and integrated filtration of four samples. User-friendly operation. Integrated vacuum system minimizes emission of odours and corrosive gases.

### 39 Extraction System B-811

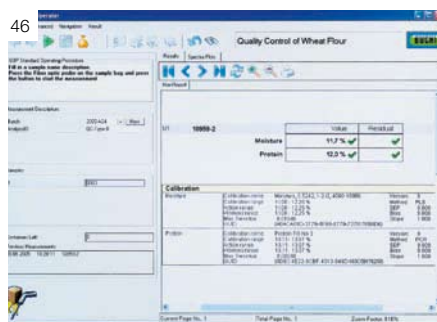
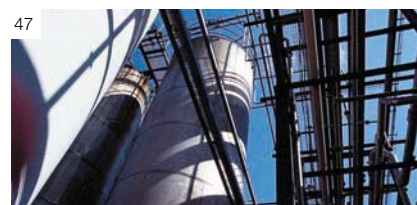
Solid-liquid extraction system for a broad range of applications. Electronic control and monitoring of extraction, rinsing and drying ensure reproducible conditions and reliable results. Suitable for solvents with a boiling point of up to 150 °C. The system offers operation in 4 different modes without rebuilding, including the classical Soxhlet method as well as hot extraction. All parts coming in contact with the solvent and sample are inert, which allows for environmental applications.

### 40 Extraction Units E-812 SOX / E-816 SOX

The Extraction Units E-812/816 SOX perform a solid-liquid extraction to determine total fat in foodstuff and animal feed. Since these units represent an original Soxhlet principle as an unique feature, they comply with standardized methods (AOAC: Acid Hydrolysis Method; §64 LFBG: Weibull Stoldt) for total fat determination. The units guarantee a fully automated and accelerated Soxhlet extraction. Two models are available: a 2-place and a 6-place unit. Cycle and/or time monitoring allows for unattended operation and best reproducibility (RSD < 1%). The Hydrolysis Units E-416 or B-411 as an ideal complement to the Extractions Units E-812/816 ensure a safe and fast acid digestion prior to extraction.

### 41 Extraction Units E-812 HE / E-816 HE

The hot extraction model runs an automated hot extraction according to Randall or Goldfisch and the EN Commission Directive 98/64/EC for feed samples. The units are dedicated for the food and feed market to analyze crude fat or total fat. Two models are available: a 2-place and a 6-place unit. Thanks to the implemented solvent library, no time-consuming method development is necessary.



**42 Mixer B-400**

Reliable analysis results depend on an optimum sample preparation. This patented mixing system crushes and homogenises samples within seconds. High functionality, simple operation and maximum safety are the main features. Available in an inert configuration for elemental trace analysis.

**43 Wet Digester B-440**

Device for the non-polluting preincineration of sample material (sulphated ash determination) or evaporation of volatile acids and bases in ceramic crucibles. Allows for the parallel treatment of up to 6 samples. Controllable heating source (halogen lamp) for a digestion range of up to approx. 550°C. Fumes arising during the process are trapped in the glass fume hood and exhausted and neutralised using Scrubber B-414.

**44 NIRFlex® N-500**

The Buchi NIRFlex N-500 is a FT-NIR spectrometer for rapid sample measurements. Typical applications include the identification of powders, liquids, and pastes, as well as the quantitative determination of constituents in pharmaceutical and food and feed industries. Its hot-swappable sampling options make it to a dedicated analyser for specific sample types and applications. Simple application methodology and minimal sample preparation make the NIRFlex N-500 the ideal tool for the control of incoming raw materials and production quality control.

**45 NIRCal® Chemometric Software**

NIRCal wizards and automatic routines will help you simplify the complex operations of chemometric evaluation, enabling you to optimise the information held in your data. The comprehensive Calibration Wizard assists the user in developing robust calibrations without extensive chemometric knowledge. Calibrations become more objective and less dependent on the user's knowledge.

**46 NIRWare Software Suite**

NIRWare is an entirely new generation of software. It has been designed to meet all the needs of our customers. The software is modular and flexible in design, without compromising its clear structure. NIRWare includes numerous presets allowing the development of new applications in just a few easy steps. NIRWare uses a database-oriented software architecture which includes a purpose-designed life cycle model, an integrated user management feature and integrated security settings for all software components.

Of course, NIRCal and NIRWare comply with the regulatory regulations of the pharmaceutical industry. But they do not force these rules upon users in other fields.

**47 NIR Online**

Go online with Buchi NIR technology. Monitoring and controlling production processes increases the quality of your products, avoiding the addition of a poor component and decreasing the consumption of chemicals by optimising the process – all fully automated and in real time. Check your quality online! Our online team looks forward to helping you meet your requirements.

**48 NIRFlex Solids Transmittance**

NIRFlex Solids Transmittance is the latest addition to the range of sampling options for NIRFlex N-500. It is optimized to perform transmission measurements of solid dosage forms, like tablets or capsules, in a very simple and convenient way.

Analytical labs throughout the world rely on Buchi laboratory equipment. Particularly in food and feed and environmental applications, customers depend on integrated workflow packages. Kjeldahl and Extraction solutions from Buchi reflect these needs, combining a comprehensive range of products with solid application support.



# Solutions for Kjeldahl and extraction



## **Smart concept for maximum flexibility**

In acid digestion, steam distillation and extraction, Buchi provides a broad range of products enabling the selection of different methods. At the same time, the actual instrumentation setup can be matched precisely to the customer's sample throughput and individual workflow.



## **Accessories for specific applications**

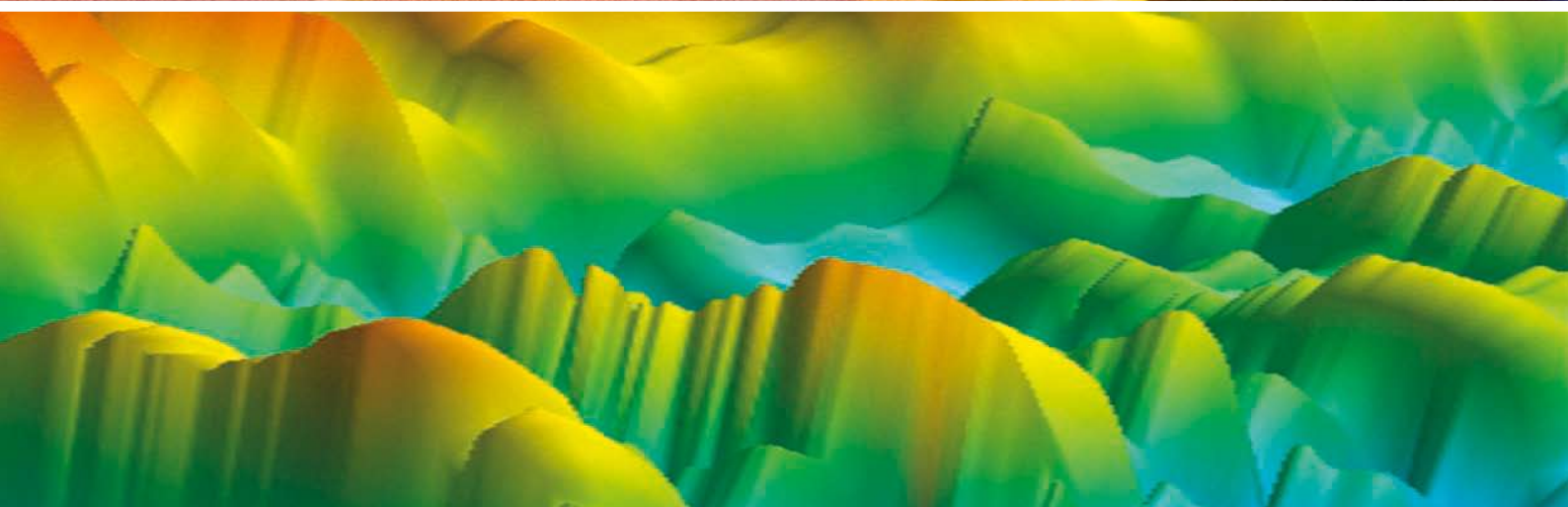
Buchi instruments are designed to work in accordance with methods such as AOAC, EPA, ISO, and DIN. Dedicated equipment e.g. for TKN digestion plus specific accessories (SO<sub>2</sub>, COD, Devarda...) offer tailor-made solutions for a wide variety of applications.



## **Application and operational support**

Buchi customers can count on dependable, robust and safe equipment. For Kjeldahl and extraction applications, Buchi has been a reliable partner for decades. Our highly trained support and service specialists and detailed technical documentation ensure that chemists receive the support they need wherever they are – offering customers true solutions to their analytical needs.

NIRSolutions are integral products that have been thought out down to the last detail. All Buchi solutions combine state-of-the-art instruments with reliable software and outstanding application and calibration support as well as technical service. They are maintained by excellently trained staff and distributors.

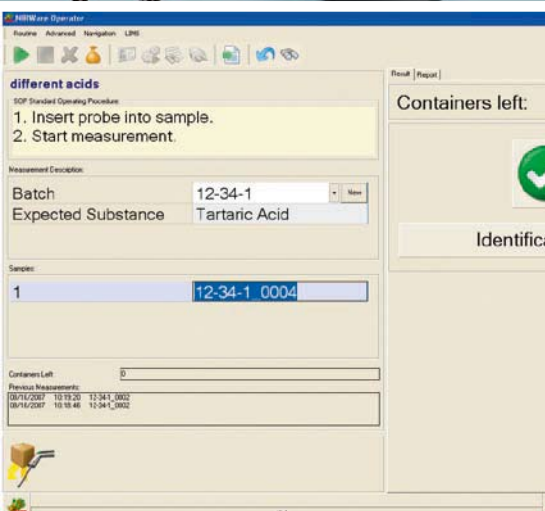


# NIR Solutions: an integral Concept



## NIRFlex N-500 with Multiple Sampling Options

The NIRFlex N-500 FT-NIR spectrometer is the result of the systematic further development of the proven Büchi NIR instrument line. The modular hardware concept is based on its improved interferometer technology – even enhancing its legendary ruggedness. The system satisfies the individual needs of all applications. For the pharmaceutical and chemical industries as well as for food and feed industries the NIRFlex N-500 provides the optimal configuration in approved Büchi quality.



## NIRWare and NIRCal Software Solutions

The modular concept and database architecture of Büchi's NIR software products are the key factors to fulfill the requirements of almost all customers – ranging from the intuitive NIRWare Operator for daily routine use to full compliance with regulatory requirements such as 21 CFR Part 11 for the pharmaceutical industry. Using the recognized NIRCal Chemometric Software with its unique Calibration Wizard only once you never would like to miss it.



## Specialised Services and Solutions

Global pre-calibrations, e.g. from INGOT®, spectral libraries, e.g. from Fluka or Mallinckrodt Baker, are only a part of Büchi's NIR Solutions. Our highest priority is to maintain solid and long lasting customer relationships. For this reason, our global competence centers all over the world are an integral part of our after-sales support service.



BÜCHI Labortechnik AG  
Postfach  
9230 Flawil 1  
Schweiz  
T +41 71 394 63 63  
F +41 71 394 65 65  
buchi@buchi.com  
www.buchi.com

BÜCHI Labortechnik GmbH  
Postfach 10 03 51  
45003 Essen  
Deutschland  
Freecall 0800 414 0 414  
T +49 201 201 747 490  
F +49 201 237 082  
deutschland@buchi.com  
www.buechigmbh.de

BUCHI Sarl  
5, rue du Pont des Halles  
Z.A. du Delta  
94656 Rungis Cedex  
France  
T +33 1 56 70 62 50  
F +33 1 46 86 00 31  
france@buchi.com  
www.buchi.fr

BÜCHI Italia s.r.l.  
Centro Direzionale, Milano  
Fiori  
Pal. A-4, Strada 4  
20090 Assago (MI)  
Italia  
T +39 02 824 50 11  
F +39 02 57 51 28 55  
italia@buchi.com  
www.buchi.it

BÜCHI Labortechnik GmbH  
Branch Office Netherlands  
Postbus 142  
3340 AC Hendrik-Ido-Am-  
bacht  
The Netherlands  
T +31 78 684 94 29  
F +31 78 684 94 30  
netherlands@buchi.com  
www.buchi.nl

BUCHI Corporation  
19 Lukens Drive, Suite 400  
New Castle  
Delaware 19720  
USA  
T +1 302 652 3000  
F +1 302 652 8777  
Toll Free: +1 877 692 8244  
us-sales@buchi.com  
www.mybuchi.com

Nihon BUCHI K.K.  
3F IMON Bldg.,  
2-7-17 Ikenohata, Taito-ku,  
Tokyo 110-0008  
Japan  
T +81 3 3821 4777  
F +81 3 3821 4555  
nihon@buchi.com  
www.nihon-buchi.co.jp

BUCHI SMP  
Services Private Ltd.  
201, Magnum Opus  
Shantinagar Industrial Area  
Vakola, Santacruz (East)  
Mumbai 400 055  
India  
T +91 22 66 98 94 50 / 51  
F +91 22 66 98 94 52  
smplisp@vsnl.com  
www.buchi.com

BUCHI UK Ltd  
5 Whitegate Business Centre  
Jardine Way  
Chadderton  
Oldham OL9 9QL  
United Kingdom  
T +44 161 633 1000  
F +44 161 633 1007  
uk@buchi.com  
www.buchi.co.uk

BUCHI Hong Kong Ltd.  
1810 Fortress Tower  
250 King's Road  
North Point, Hong Kong  
China  
T +852 2389 2772  
F +852 2389 2774  
china@buchi.com  
www.buchi.com

BUCHI Shanghai Trading LLC  
21/F Shanghai Industrial  
Investment Building  
18 Caoxi Bei Road  
200030 Shanghai  
China  
T +86 21 6468 1888  
F +86 21 6428 3890  
china@buchi.com  
www.buchi.com

BUCHI (Thailand) Ltd.,  
77/175, Sin Sathon Tower,  
39th FL, Unit F  
Krunghthonburi Rd.  
Klongtongsai, Klongsan  
Bangkok 10600  
Thailand  
T +66 2 862 08 51  
F +66 2 862 08 54  
bacc@buchi.com  
www.buchi.com

We are represented by more than 100 distribution  
partners worldwide. Find your local representative at  
www.buchi.com

Quality in your hands